

SHANTUI

SBH388

Backhoe loader



Engine Model: CUMMINS QSB3.9
Gross Power: 74 KW/2400 RPM
Operating Weight: 8,200kg

SBH388 SPECIFICATIONS

MODEL

Operating Weight 8200 kg

SPECIFICATION

L*W*H 6100×2365×3752 mm

Wheel base 2200mm

Min. Ground Clearance 300mm

Loader Bucket Capacity 1.0m³

Breakout Force 38KN

Rated Load 2500KG

Bucket Dumping Height 2742mm

Bucket Dumping Distance 925mm

Digging Depth 52mm

Backhoe Bucket Capacity 0.3 m³

Max. Digging Depth 4082/4500mm

Swing Angle of Excavator Grab 190°

Max. Pulling Force 39kN

ENGINE

Model Cummins QSB3.9 Tier III

Type In Line, Four cylinder, Direct injection, Turbocharged

Cylinder-Inside Diameter*Stroke 4-102×120

Rated Power 74kW

Rated Speed 2400r/min

Min. Fuel Consumption ≤242g/km.h

Max.Torque ≥330N.M

Displacement 3.9L

STEERING SYSTEM

Model of Steering Device BZZ5-250

Steering Angle ±36°

Min. turning radius 6581mm

Pressure of the system 12Mpa

AXLE

Type Conventional

Main Transmission Type Double Reduction

Final Reducer Single Stage Final Reducer

Rated Loader of Axle 8/18.5t

TRANSMISSION SYSTEM

Torque Converter YJ280

Type Single-stage Three Elements

Max. Efficiency 84.40%

Inlet Pressure 1.3Mpa—1.5 Mpa

Outlet Pressure 0.25Mpa—0.3 Mpa

Cooling Method Oil-cooling Pressure Circulation

Transmission Type Countershaft Power Shift

Oil Pressure of Clutch 1373Kpa—1569 Kpa

Gears 4 Fwd, 4 Rev

Max.Speed 28Km/h

TYRE

Size 14-17.5/19.5L-24

Pressure of Front wheel 0.55Mpa

Pressure of Back Wheel 0.22Mpa

BRAKE SYSTEM

Air Over Oil Caliper Brake

Service Brake

External Type

Self-regulation

Self-balance

Parking Brake

Operation Power Implementing brake

Manual Operation Power Terminating Brake

HYDRAULIC SYSTEM

Digging Force of Excavator Bucket 46.5KN

Digging Force of Excavator Arm 44KN

Front Bucket Lifting Time 6.8S

Front Bucket Lowering Time 3.1S

Front Bucket Discharge Time 2.0S

ELECTRICAL SYSTEM

Battery 2*12, 85Ah

Alternator 28V, 90A

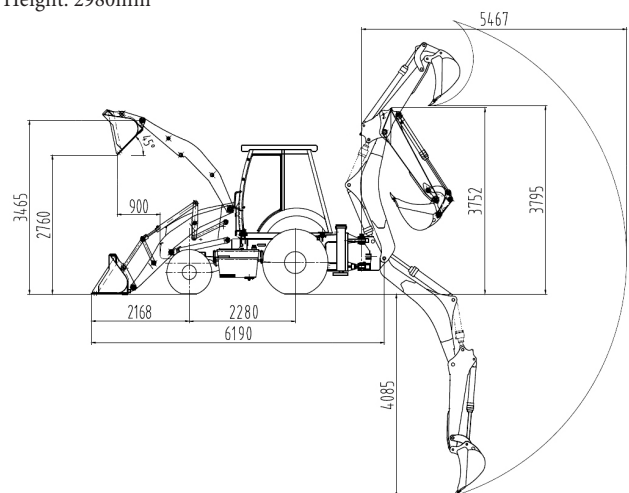
Starter motor 24V, 6kW

DIMENSIONS

Length: 6320mm

Width: 2460mm

Height: 2980mm



* THE SPECIFICATIONS ARE SUBJECT TO CHANGE WITHOUT NOTICE. THE PICTURES MAY INCLUDE OPTIONS. THE ACTUAL COLOR & APPEARANCE OF THE PRODUCT MAY DIFFER FROM WHAT IS SHOWN.



Shantui Social

SHANTUI CONSTRUCTION MACHINERY CO., LTD.

ADD: No. 58, G327 Highway, Jining City, Shandong, CHINA

TEL: +86-537-2909369

FAX: +86-537-2311219

EMAIL: trade@shantui.com

WEB: www.shantui.com

SHANTUI
VALUE THAT WORKS